

**ALEX ACKLIN**

Compositor

<https://vimeo.com/alexanderacklin/alex-comp-reel>

alexacklinartist@gmail.com

## ACTOR REPLACEMENT

*From Batman (1989)*



**BEFORE**



**AFTER**

Denoising (NEAT Video) | Keying | Edge Treatment | Roto | Color Correction | Focus Matching | Background Reconstruction | Grain Matching

## SET EXTENSION

*Inspired by Gotham*



**BEFORE**



**AFTER**

3D Lighting | 2D Point Tracking / Planar Tracking / 3D Camera Tracking | Camera Projection | Element Integration | Atmospheric Effects | Perspective Matching | Focus Matching | Grain Matching

## CG COMPOSITING

*Inspired by Midway (2019)*



**BEFORE**



**AFTER**

CG by LBS FX Class 22 | AOVs Compositing | 2D Relighting | Focus Matching | Atmosphere | Lens Flares | Lens Effects | Color Correction | Grain

**ALEX ACKLIN**

Compositor

<https://vimeo.com/alexanderacklin/alex-comp-reel>

alexacklinartist@gmail.com

### MUZZLE FIRE



**BEFORE**



**AFTER**

CG Bullet by Jordan Gamache | 2D Element Integration | Relighting | Focus Matching | Grain Matching

### DIGITAL MAKEUP

*From Batman Begins (2005)*



**BEFORE**



**AFTER**

Planar Tracking | Smart Vector | Face Tracking | Warping | 2D Elements Integration | Paintouts | Focus Matching | Grain Matching

### ENERGY DRINK COMMERCIAL PITCH



**AFTER**

3D Camera Tracking | 3D Projection | Eye Reflections | Color Grading | Look Development | 2D Elements Integration | Retiming | Warping | Matchmoving | Roto | Grain Matching

**ALEX ACKLIN**

Compositor

<https://vimeo.com/alexanderacklin/alex-comp-reel>

alexacklinartist@gmail.com

## ETHEREAL EFFECTS



**BEFORE**



**AFTER**

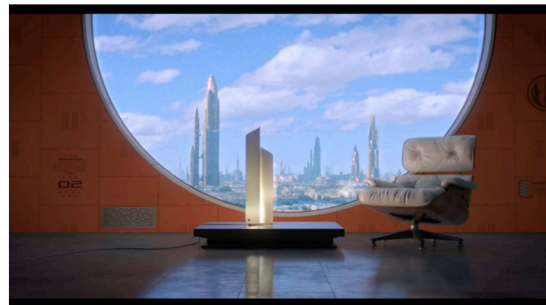
2D Point Tracking | Keying | Edge Treatment | Despill | Color Grading | Look Development |  
2D Elements Integration | Retiming | Warping | Matchmoving | Roto | Grain Matching

## CG COMPOSITING

*Inspire by Andor*



**BEFORE**

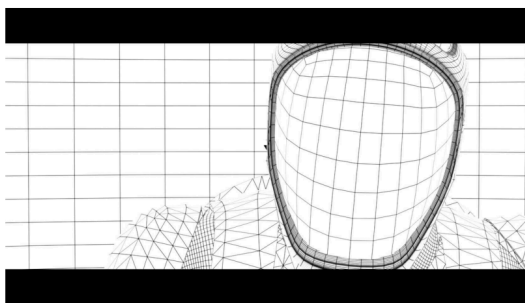


**AFTER**

AOVS Compositing | Color Correction | Matte Painting | Set Extension | Replace Background | Focus  
Matching | Ship Integration | Lamp Glow | Reflections Change

## CG COMPOSITING

*Rob the Spaceman*



**BEFORE**



**AFTER**

Animation by Jean Moreno | 3D Lighting | AOVS Compositing | Color Correction | Glow | Eye Specs |  
Helmet and Suit Dirt | Breath Integration | Grain

**ALEX ACKLIN**

Compositor

<https://vimeo.com/alexanderacklin/alex-comp-reel>

alexacklinartist@gmail.com

## SCREEN BURN IN

*From Transformers (2007)*



BEFORE



AFTER

Planar Tracking | Screen Paintout | Reflection Reconstruction | Layout Design | Element Retiming |  
2D Elements Integration | Interactive Light | Focus Matching | Grain Matching

## HAIR KEYING

*Inspire by The Fifth Element*



AFTER

Denoise (NEAT Video) | Key | Integration | Grain Matching

## MISSING BULLETS CHALLENGE

*From The Hurt Locker (2008)*



BEFORE



AFTER

Animation | 3D Lighting | Rendering | AOVs Compositing | Integration | Color Correction | Grain  
Matching

**ALEX ACKLIN**

Compositor

<https://vimeo.com/alexanderacklin/alex-comp-reel>

alexacklinartist@gmail.com

## LOGO REPLACEMENT



**BEFORE**



**AFTER**

Planar Tracking | Paintouts | Logo Integration | Color Correction | Focus Matching | Motion Blur |  
Shadows Reconstruction | Specular Highlights Reconstruction | Grain Matching

## WALL REPLACEMENT

*Inspired by The Last of Us*



**BEFORE**



**AFTER**

3D Camera Tracking | 3D Projection | Graffiti Integration | Roto | Weathering | Shadow Integration |  
Color Correction | Focus Matching | Motion Blur | Lens Distortion | Grain Matching